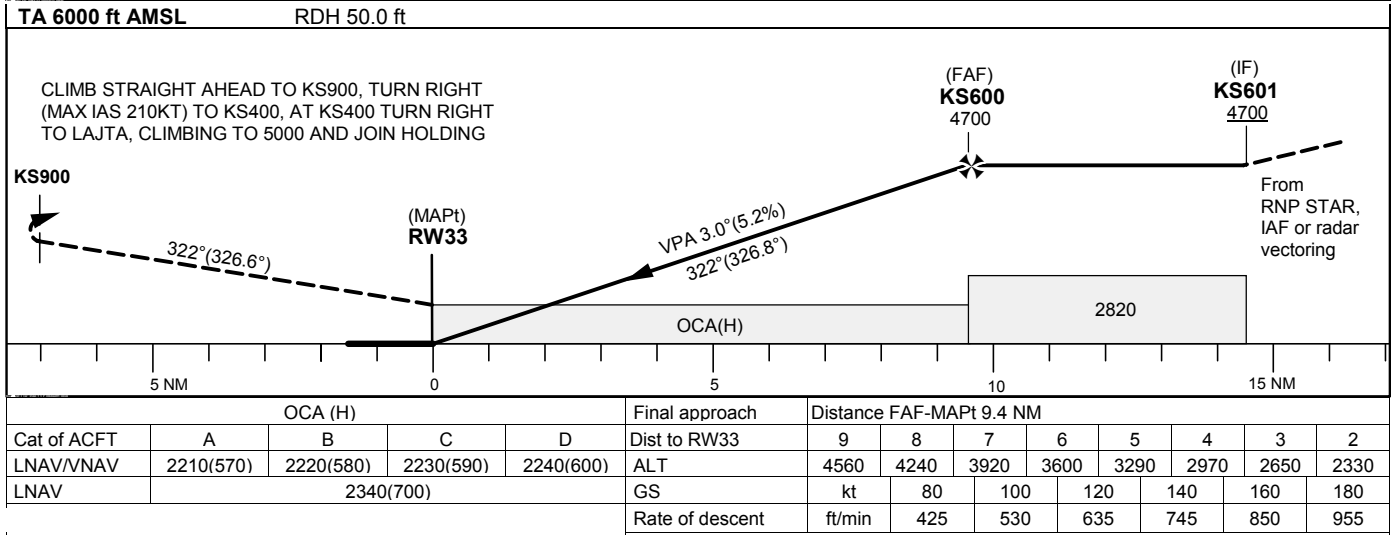
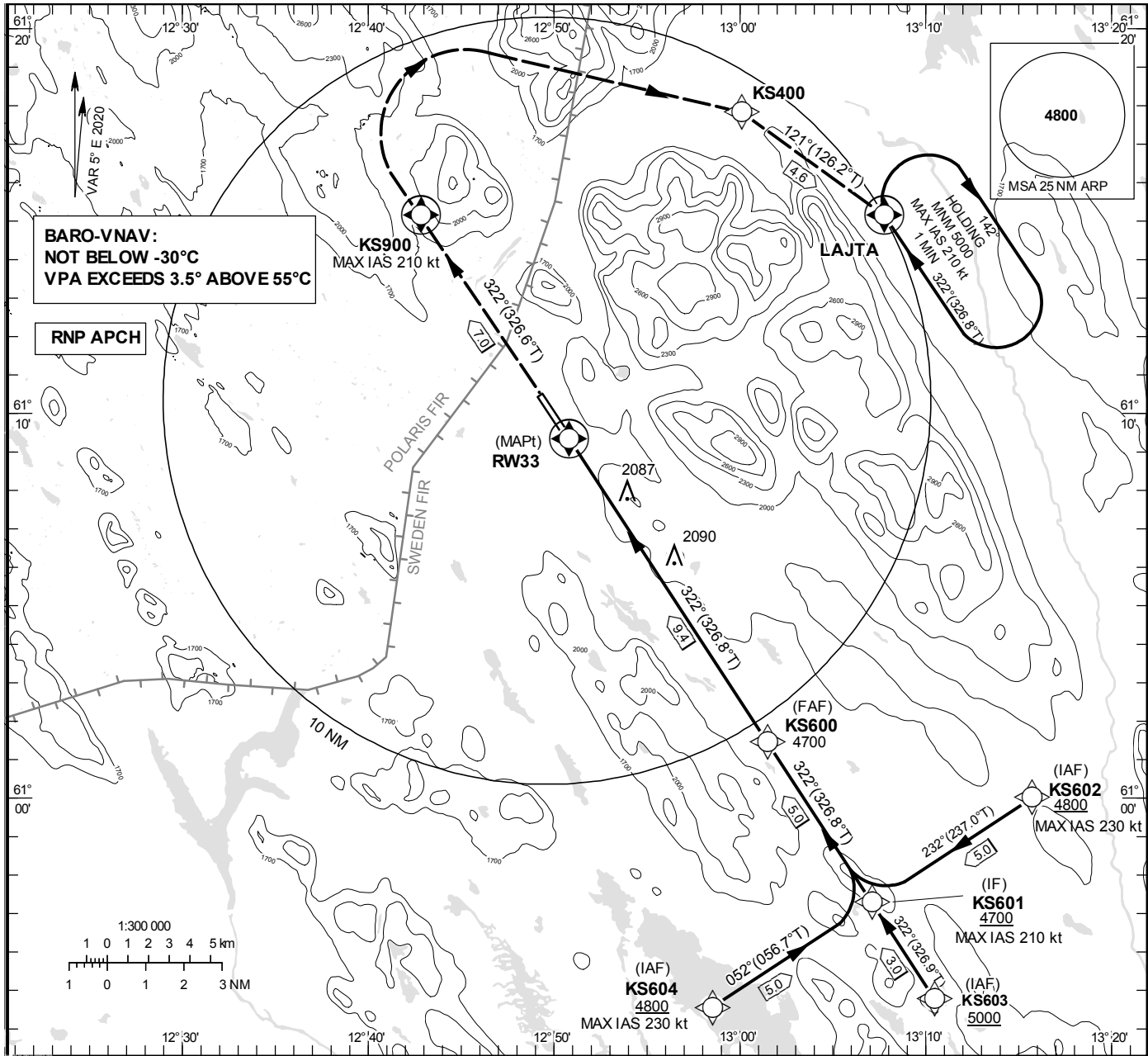


INSTRUMENT APPROACH CHART – ICAO
THR ELEV 1643.8 ft, AD ELEV 1649 ft
OCH are related to THR.
BRG are MAG (True).
ALT, HGT and ELEV in ft.

SÄLEN TOWER 124.460



SÄLEN/Scandinavian Mountains**RNP RWY 33 via KS602**

Path Desc	Waypoint Identifier	Fly-over	Course °M(°T)	Dist (NM)	Turn Dir	Altitude	Speed	VPA/ RDH	Rec Navaid	Navigation Specification
IF	KS602	-	-	-	-	+4800	-230	-	-	RNP APCH
TF	KS601	-	232° (237.0°)	5.0	-	+4700	-	-	-	RNP APCH

RNP RWY 33 via KS603

Path Desc	Waypoint Identifier	Fly-over	Course °M(°T)	Dist (NM)	Turn Dir	Altitude	Speed	VPA/ RDH	Rec Navaid	Navigation Specification
IF	KS603	-	-	-	-	+5000	-	-	-	RNP APCH
TF	KS601	-	322° (326.9°)	3.0	-	+4700	-	-	-	RNP APCH

RNP RWY 33 via KS604

Path Desc	Waypoint Identifier	Fly-over	Course °M(°T)	Dist (NM)	Turn Dir	Altitude	Speed	VPA/ RDH	Rec Navaid	Navigation Specification
IF	KS604	-	-	-	-	+4800	-230	-	-	RNP APCH
TF	KS601	-	052° (056.7°)	5.0	-	+4700	-	-	-	RNP APCH

Path Desc	Waypoint Identifier	Fly-over	Course °M(°T)	Dist (NM)	Turn Dir	Altitude	Speed	VPA/ RDH	Rec Navaid	Navigation Specification
IF	KS601	-	-	-	-	+4700	-210	-	-	RNP APCH
TF	KS600	-	322° (326.8°)	5.0	-	@4700	-	-	-	RNP APCH
TF	RW33	Y	322° (326.8°)	9.4	-	@1694	-	-3.0/50	-	RNP APCH
TF	KS900	Y	322° (326.6°)	7.0	-	-	-210	-	-	RNP APCH
DF	KS400	-	-	-	R	-	-210	-	-	RNP APCH
TF	LAJTA	-	121° (126.2°)	4.6	-	+5000	-210	-	-	RNP APCH

ESKS Holding LAJTA

Path Desc	Waypoint Identifier	Fly-over	Course °M(°T)	Dist (NM)	Turn Dir	Altitude	Speed	VPA/ RDH	Rec Navaid	Navigation Specification
HM	LAJTA	Y	322° (326.8°)	-	R	+5000	-210	-	-	RNP 1